

Sherman Elementary School Newsletter

wcusd15.org/ses/

VOLUME 7, ISSUE 10

FEBRUARY 3, 2012

Important Numbers

Office 217-496-2021

Fax 217-496-2473

Attendance Line 217-566-2325

Early dismissal/No School

There is 11:00 dismissal on Friday, February 17. There is no school on Monday, February 20.

Dates to remember

- **Friday, February 3– PTO Family Fun Night from 5:30-7:30**
- **Thursday and Friday, February 9-10– Final turn in date for Sherman Jump**
- **Friday, February 17– 11:00 dismissal**
- **Monday, February 20– No school**
- **Tuesday, February 21– PTO meeting at 6:30**
- **Monday, March 5– No School**
- **March 6-10– ISAT testing for grades 3-5**

Recycle for Ronald



For many years, the staff at Sherman Elementary have collected pop tabs for the Ronald McDonald House. We would like to extend an invitation to the SES families to join in this effort. In the near future, there will be a collection "house" placed by the front door for students/families to drop off tabs from aluminum cans to assist families who travel to the Springfield area with children needing medical treatment. Collecting pop tabs is a wonderful way to teach kids about recycling and how they can have an impact on their community! We have a volunteer that takes them to Springfield for us on a regular basis. If sending in a large amount, please do so in a wide-mouth container or a baggie. Thanks in advance for your support.

Kindergarten Pre-registration for the 2012-13 school year

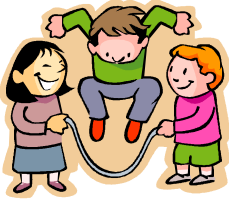
Kindergarten pre-registration/orientation for the 2012-2013 school year will be held Wednesday, March 14 at 6:30 PM in the elementary school cafeteria. **This will be an informational meeting for parents only. Children need not attend.** Any child who will be five years old on or before September 1, 2012 is eligible to enter kindergarten. Please bring a copy of your child's **registered county birth certificate** and a current physical. A copy of the official county birth certificate is required, as is a current physical and proof of residence, prior to the beginning of the kindergarten year. Physical forms will be available on March 14. Parents who will not be available on the evening of March 14 may register their child from 8:30 AM to 2:30 PM any day during the week of March 19-23.

SES to offer Parent University

When you ask your child about his/her day, does he/she talk about the NEOs? Math Facts in a Flash? AR? STAR Reading or STAR Math? If so, then they are talking about the components of the Renaissance Learning Light-house School Grant that Sherman Elementary School received in May 2011.

We at Sherman Elementary invite you to attend a Parent University night that will be held on March 8 at 6:30 PM. Several staff members will give an overview of the components of this grant and what we hope to achieve with these learning tools.

Sherman Jump



Sherman Jump is next week! We are still in need of some volunteers next week during the following times: Thursday - arrive in the gym at 7:55. We will set up at 7:55, 1st session is 8:15-9:15. 2nd session is 10:15-11:15. Final session is 12:45-1:45. Friday - arrive in gym at 7:55. We will set up at 7:55, 1st session is 8:15-9:15, 2nd session is 9:30-10:30 and the final session is 11:30-12:30. If you are available to help please feel free to email me at jones@wvusd15.org. Thank you for your continued support of Sherman Jump. We are so excited about the opportunity to donate funds to the American Cancer Society!

ISAT Testing

Illinois Standard Achievement Tests for all 3rd-5th grade students will be given the week of March 5, 2012. Please try to make every attempt to have your child at school and avoid making doctor/dental appointments during that week. It is also important that students receive plenty of sleep and eat a good breakfast before coming to school.

PTO News

As a thank you to all the SES parents for your support of the PTO, please join us for the PTO Family Fun Night on Friday, February 3 from 5:30-7:30 PM. There will be free pizza and soda as well as games, crafts, and a cake walk. Spirit Wear will be available to purchase as well..

The next PTO meeting is Tuesday, February 21 at 6:30 PM in the library. Hope to see you there! * **NOTE DATE CHANGE**

The PTO is also looking for a new chairperson to take on the Market Day fundraising program beginning next year. Amy Kluemke is stepping down from this role as her child will be leaving SES next fall for WJHS. If you are interested in filling this position, please contact Amy at kluemke@wvusd15.org as she would like to work with/train you at the sales throughout the rest of this school year. A big thank you to Amy for all the work she has done these past few years as chair.

Outdoor Recess Policy

When there is outside recess, all children will be required to go out unless we have a doctor's note stating otherwise. Please do not send a note to the teacher asking him/her to keep your child in from recess. Thank you for your cooperation with this policy.

Also, as the weather cools down, have your child dress appropriately for outside recess. We will go outside for recess unless the temperature falls below 20 degrees.

Attendance Policy

We encourage parents to get notes from the doctor, dentist, etc. when your child misses school for appointments and/or illness.

Williamsville School District Gains Extension of Safe Routes to School Grant

The Williamsville School District gained an extension of their SRTS grant to have time to get a "Walking School Bus" organized for the spring of 2012. Now that the Sherman sidewalk project is completed, plans are underway for a "Walking School Bus" for those students who would like to participate, living in Original Sherman, Brookside Glen, Brookside Glen at the Prairie, Quail Ridge, and Steeplechase.

A "Walking School Bus" is an organized effort to get students to walk to and from school with adult volunteers. It is much like a bus route with stops along the way to add more students to the group. A walking route will be established based on where students live.

72% of students attending Sherman Elementary live in Sherman, and 32% of those students live within 1.5 miles of the Elementary School in nearby subdivisions. Presently, only 1% to 2% of those students walk to or from school. 22% of students attending Sherman Elementary live in Williamsville, while the remaining 6% of students live in other areas.

Statistics at Williamsville Jr. High are very similar, 70% of students live in Sherman while 24% live in Williamsville. However, of the 24% that lives in Williamsville, between 3% to 8% walk to or from school. It is more common for students to walk home from school rather than to school.

Fewer and fewer students walk or bike to and from school, and several studies suggest that sedentary children are more likely than active children to become sedentary adults. These studies also suggest they will have increased risk of obesity, diabetes, hypertension, disorders of high cholesterol, and cardiovascular diseases. A sedentary lifestyle is also associated with increased risks of several cancers common in adults.

The American Academy of Pediatrics recommends that 30 minutes of moderate-intensity physical activity occur during the school day. Walking or biking to and from school is a great way to begin and end your day with exercise, and socialize with friends.

Adult volunteers who enjoy walking, and are interested in walking with students in some part should contact the project Coordinator, Sandra Walden at 544-3234 or swalden@gcctv.com. Volunteers will be subject to a criminal background check.

For more information regarding a walking school bus visit:

http://guide.saferoutesinfo.org/walking_school_bus/index.cfm

<http://www.walkingschoolbus.org/>

Worth Quoting

"In the final analysis it is not what you do for your children but what you have taught them to do for themselves that will make them successful human beings."

~**Ann Landers**

New Requirement for Tdap Vaccine to Treat Whooping Cough

Pertussis, commonly known as whooping cough, is caused by a germ that lives in the mouth, nose, and throat. The disease is spread through coughing and sneezing. Early symptoms are similar to the common cold with a runny nose, occasional cough, sneezing and mild fever. Over the course of 1 to 2 weeks the cough gradually worsens. Severe coughing attacks develop which consist of many rapid coughs and a high pitched "whoop" as the infected person breaths in after a coughing episode. The cough lasts for many weeks.

Most people recover from whooping cough, but it can cause severe symptoms. Although older children and adults generally have milder symptoms, whooping cough can be quite serious in young children, particularly to those younger than 1 year of age. In the early 1900's it was one of the most common childhood diseases and a major cause of childhood death in the U.S. Pneumonia is a common complication of the bacterial infection.

Vaccination against whooping cough is given in combination with the diphtheria and tetanus vaccine at 2, 4, 6, and 15 months of age and again at 4-6 years of age. In the past these childhood doses were the only recommended for protection against disease.

Research shows that immunity begins to wane by adolescence. Statistics show that cases of whooping cough are currently on the rise in Illinois and across the nation.

In response to the recommendation of the Advisory Committee on Immunization Practices (ACIP), **a dose** of combined Tetanus/Diphtheria/acellular Pertussis vaccine (**Tdap**) to be administered at 11-12 years of age is **now required** by the Illinois Department of Public Health **for school attendance**.

In accordance with the recently amended Illinois Administrative Code this requirement will be enforced beginning with the 2012-13 school year as follows:

"Any child entering sixth grade shall show proof of receiving one dose of Tdap vaccine regardless of the interval since the last DTap, DT, or Td dose."

"Students entering seventh through twelfth grade who have not already received Tdap are required to receive 1 Tdap dose regardless of the last interval since the last DTap, DT or Td dose." (see Section 665.250 of Illinois Administrative Code)

If you have a child who falls in one of these age groups, please contact your health care provider to see whether or not he/she has already received the **Tdap** vaccine.

This booster dose protects those receiving it. But, as the ACIP points out, it protects the babies as well. Anyone having contact with children under age 1 who gets vaccinated helps to reduce the spread of disease to infants who are not fully immunized and, therefore, are unprotected.

The new rules became effective on September 27, 2011. Since this was after the beginning of the current school year, **enforcement will begin next school year 2012-13.**

Feel free to contact me in the School Health Room with any questions you might have. The number at Sherman Elementary is 496-2021.

Tammie Rue, LPN

Information adapted from Illinois Department of Public Health, Illinois State Board of Education